

16

1614 23

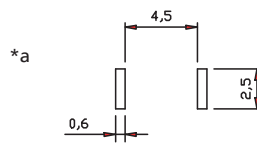
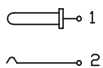
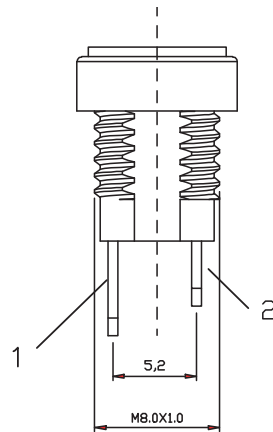
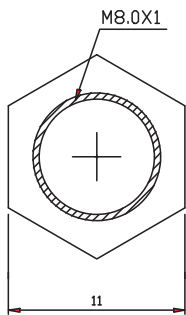
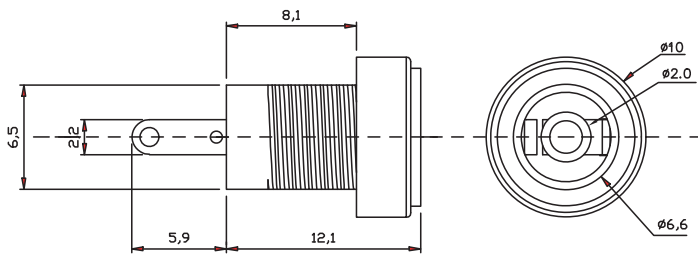
Power supply connectors



Power supply chassis socket, straight version, with solder eyes, for printed circuit boards, for front side mounting

16

1614 23



*a printed circuit board layout

Environmental conditions

Temperature range -30 °C/+70 °C

Materials

Insulating body	PA, V-0 according to UL94
Contact spring	CuZn, nickel-plated
Contact pin	CuZn, nickel-plated
Hexagonal nut	CuZn, nickel-plated

Mechanical data

Diameter opening	5.6 mm
Diameter center pin	2.0 mm
Mating cycles	5000 ¹
Insertion force	3–30 N
Withdrawal force	3–30 N

¹ gemessen mit einem Lehrenstecker

Electrical data (at T_{amb} 20 °C)

Contact resistance	≤ 30 mΩ
Rated current	2 A
Rated voltage	30 V
Rated impulse voltage	500 V/60 s
Insulation resistance	≥ 100 MΩ

Associated products

Counterparts		
☞ 1633 02	☞ 1633 03	☞ NES/J 21
☞ NES/J 21 W	☞ NES/J 210	☞ XNES/J 210

16

1614 23

Designation	Pole Number	PU (Pieces)	MDQ (Pieces)
1614 23	2	300	900

Packaging:

in bulk, in a cardboard box or a plastic bag